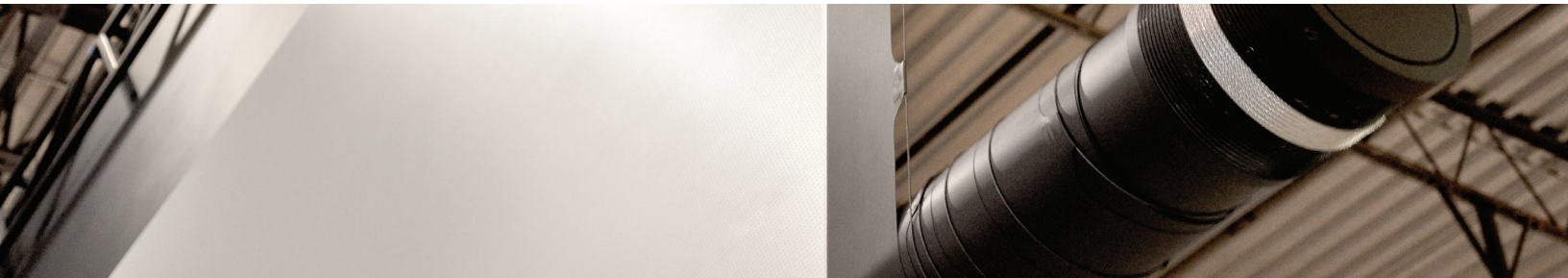


# STRONGVIEW XL MOTORIZED SCREENS

## INSTRUCTIONS



### ⚠ READ ALL INSTRUCTIONS BEFORE USE

- ▶ Always leave enough screen material rolled on tube for **at least** one whole rotation.
- ▶ These units should only be installed, operated and serviced by qualified technicians.
- ▶ Screens should never be operated over areas where people are present.
- ▶ Do not tilt screen assembly.

## INSPECTION AND PREPARATION

1. Before installing, inspect the screen and truss for any foreign objects, dirt or damage that may have occurred during transport.
2. Manipulate the screen very carefully to avoid any damage.
3. Use a minimum of 3 equally distributed attachment points to hang the steel truss and make sure the suspension system does not interfere with screen operation.
4. Once the screen is installed, remove the foam from the tube. Make sure the tube is suspended and that there is tension on every cable.
5. Verify that the cable winds toward the screen on the tube.
6. Make sure nothing is under the screen that could interfere with the tube as it goes down.
7. Verify that the screen is level once installed (on the 2 axis).
8. Remove the yellow lock pins from both sides before use.

### ⚠ WARNING

#### REMOVE THE YELLOW LOCK PINS FROM BOTH SIDES BEFORE USE

Motor side



End



Always leave enough screen material rolled on tube for **at least** one whole rotation.



1 877 755-3795  
sales@strongmdi.com  
www.strongmdi.com

▶ **POWER**  
100-125 VAC 60 Hz  
6,5 A

▶ **MOTOR**  
0.5 HP Permanent  
magnet DC gear motor

▶ **DRIVE**  
Microprocessor  
regenerative SCR drive  
with dynamic brake

▶ **CONTROL VOLTAGE**  
12-20 volts VDC,  
100 mA

## ELECTRICAL HOOK-UP

**Strong | MDI** supplied a power cord with connectors. An AC grounded extension cord is needed to plug motor drive and wireless control interface.

## REMOTE CONTROL CONNECTIONS

<b>NC:</b> No connection	<b>GD:</b> - / - Led
<b>P1:</b> Stop #1	<b>AS:</b> Alt. stop (for limit switch)
<b>P2:</b> Stop #2	<b>VC:</b> VCC (common)
<b>P3:</b> Stop #3	<b>LD:</b> Led +
<b>P4:</b> Stop #4	<b>J←:</b> Jog left
<b>SP:</b> Stop / program	<b>J⇒:</b> Jog right

Control cable shield should be hooked up to the **GD** on one end of the cable.

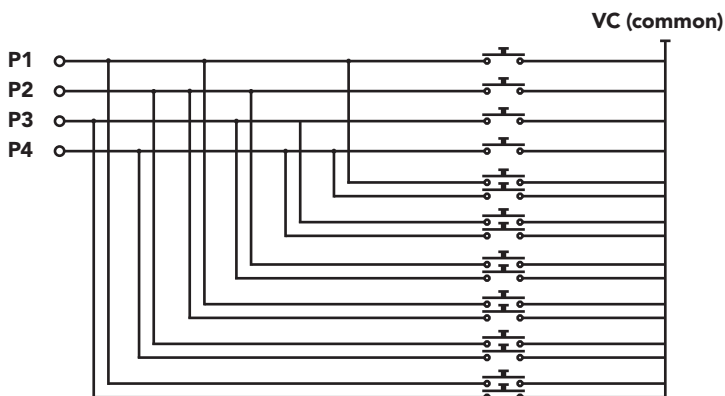
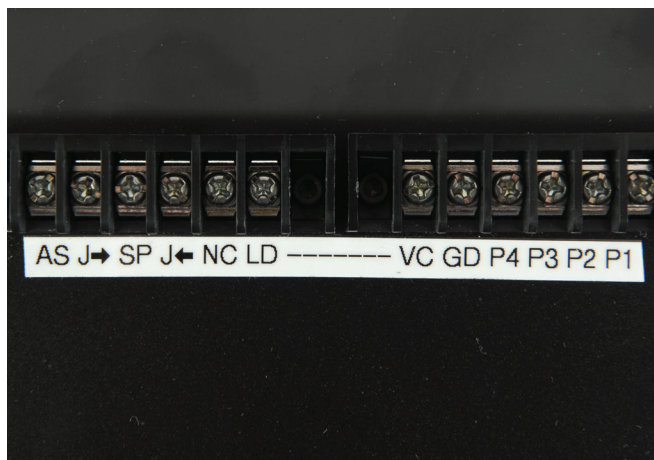
## REMOTE CONTROL WIRING

Follow the schematic to program up to 10 different stop positions with the keypad.

## ⚠ WARNING

### DISCONNECT POWER BEFORE MECHANICAL OR ELECTRICAL SERVICING.

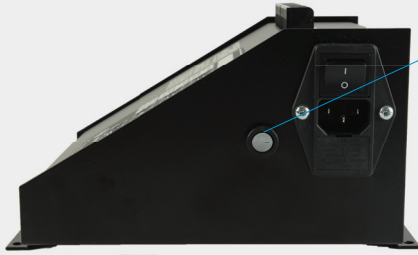
This screen may be remotely started at any time without warning.



**MDI**

1 877 755-3795  
sales@strongmdi.com  
www.strongmdi.com

## FUSE REPLACEMENT



### MOTOR FUSE

- ▶ The motor fuse is located beside the power fuses in its own holder.
- ▶ Use a 7 Amps 250 V AC SLOBLO fuse.
- ▶ Use a flat screwdriver to access fuse

## FUSE REPLACEMENT



### POWER FUSES

- ▶ The power fuses are located on the fuse drawer accessible by a slot, as indicated by the arrow.
- ▶ Use 10 AMPS 250 V AC fuses
- ▶ Use a flat screwdriver to remove the fuse drawer

**VOLTAGE SELECTION**  
Align triangles to select proper voltage



1. Position 1 / JOG
2. STOP KEY
3. Position 2 / JOG
4. On / Standby

## WIRELESS REMOTE

**Strong | MDI** has provided you with a handheld wireless remote. The maximum operating range is 70 feet. To exit standby mode simply press the stop button.

## PROGRAMMING

**PLEASE NOTE THAT THE POSITIONS HAVE BEEN PRESET BEFORE SHIPPING;**

The instructions below are provided in case adjustments are necessary

**THE UNIT IS ALREADY PROGRAMMED AS FOLLOWS:**

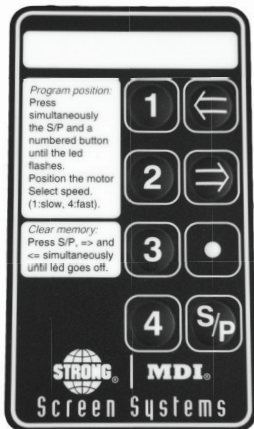
Position #1: screen up. Position #2: screen down.

**FOLLOW THESE STEPS TO ADJUST SCREEN POSITIONS:**

1. Press the STOP KEY on the wireless remote if it has been used 2 minutes prior to programming.
2. Simultaneously press S/P and 1 (up position) or 2 (down position). Release when led flashes.
3. Jog to required position.
4. Select speed. (1 slow, 4 fast)

**RESET (ERASE MEMORY)**

Simultaneously press S/P, ← and →. Release when led goes off.



In operating mode, ← or → (jog) travel is limited by the furthest stops.



1 877 755-3795  
sales@strongmdi.com  
www.strongmdi.com