

MASKING MOTORS

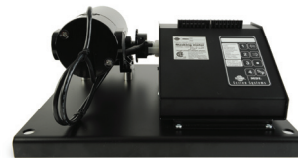
K SERIES

The **K Series Motors** are both versatile and reliable. This series offers a large range of features to accommodate specific requirements.



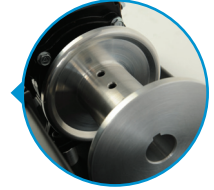
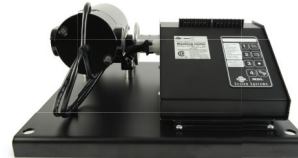
K1/4-S

The K1/4-S features an output shaft on each side of the gearbox which is fitted with a sprocket (21 teeth; for chain #35). 1 sprocket supplied with motor, additional sprocket options available.



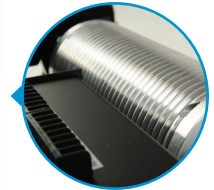
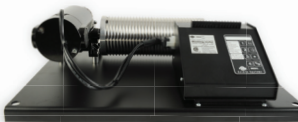
K1/4-RD

The K1/4-RD has the same features that the K1/4-S but supplied with a 3 inch wide cable drum on the shaft instead of a sprocket.



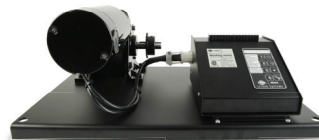
K1/4-GD

The K1/4-GD is primarily used to operate curtains horizontally. The K1/4-GD will motorize its load through a grooved cable drum. There is a second output shaft which can be fitted with a sprocket or a 3 inch wide cable drum.



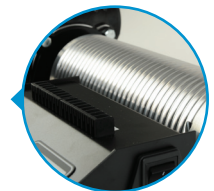
K1/2-S

The K1/2-S is designed to operate heavy masking vertically. The K1/2-S is fitted with a sprocket (21 teeth; for #35 chain). Equipped with one output shaft.



K1/2-GD

The K1/2-GD is used to operate heavy curtains or masking vertically. The K1/2-GD utilizes a 10" grooved cable drum.



MASKING MOTORS

K SERIES

FEATURES		OPTIONS	
▶ Microprocessor based motion control	▶ Ramped start and stop operation	▶ Chain: #35 X 10 feet.	▶ Drum: 3 inches wide cable drum.
▶ 10 programmable positions	▶ 1/4 or 2/3 Horse Power	▶ Cables: Polyester 3/16" shrouded steel cable.	▶ Sprocket: 21 teeth sprocket for #35 chain.
▶ 4 different speeds.	▶ CSA certified File LR108997	▶ Remote keypad with cable.	
▶ Remote keypad available	▶ Can be customized upon request		
▶ 120 VAC or 220 VAC, 50 or 60 Hz	▶ Dry contact control		

		1/4 HP			2/3 HP	
		K1/4-S	K1/4-RD	K1/4-GD	K1/2-S	K1/2-GD
		2.7" sprocket	3" drum	10" grooved drum	2.7" sprocket	10" grooved drum
Operating Voltage		110/220 VAC	110/220 VAC	110/220 VAC	110/220 VAC	110/220 VAC
Amp. Max.		2.5 A	2.5 A	2.5 A	6.5 A	6.5 A
Max. Load	lbs	90	90	50	320	200
	kg	41	41	23	145	90
RPM		62	62	62	48	48
Speed	fpm	10 - 40	10 - 40	16 - 65	8.5 - 34	12.5 - 50
	m/sec	0.04 - 0.20	0.04 - 0.20	0.08 - 0.33	0.04 - 0.17	0.06 - 0.25
Torque	lbs/in	109	109	109	440	440
	N.m	12.6	12.6	12.6	50	50
Power	HP	0.25	0.25	0.25	0.66	0.66
	watts	234	234	234	612	612
System Limit Revolutions		200	200	200	200	200
Maximum Displacement	feet	142	142	30	142	30
	meters	43.3	43.3	9.1	43.3	9.1
Programmable Positions		10	10	10	10	10
Ramped Start & Stop		Yes	Yes	Yes	Yes	Yes
Programmable Speed		Yes	Yes	Yes	Yes	Yes